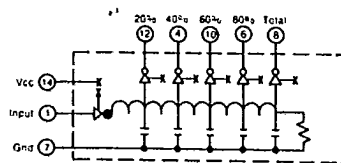
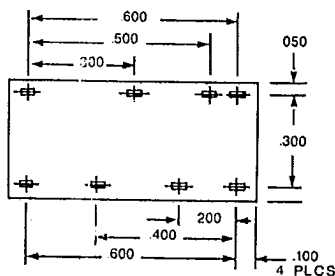
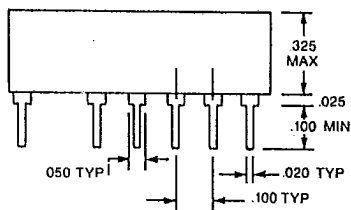
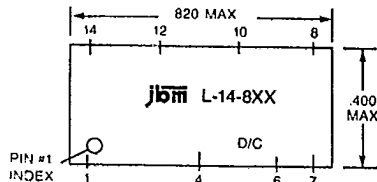


# Military Hi-Reliability

## L-14-800 SERIES Dual Triggerable 5 Tap Active Epoxy Encapsulated



### FEATURES

- Utilizes hermetic/ceramic integrated circuits screened to MIL-STD-883, LEVEL B

### DELAY LINE CHARACTERISTICS

#### Input Characteristics:

- V<sub>IH</sub> Logic "1" Input Voltage ..... 2.0V Min.
- V<sub>IL</sub> Logic "0" Input Voltage ..... 0.8V Max.
- I<sub>IH</sub> Logic "1" Input Current ..... 50µA Max.
- I<sub>IL</sub> Logic "0" Input Current ..... -2.0mA Max.

#### Output Characteristics:

- V<sub>OH</sub> Logic "1" Output Voltage ..... 2.7V Min.
- V<sub>OL</sub> Logic "0" Output Voltage ..... 0.5V Max.
- I<sub>CC</sub> Supply Current ..... 75mA Max.

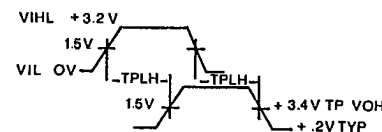
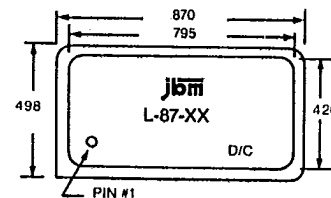
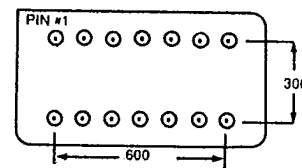
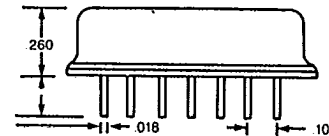
#### Environment:

- Operating temperature ..... -55°C to +125°C
- Storage temperature ..... -55°C to +125°C
- Operating supply voltage ..... 4.5 to 5.5V

#### Test Conditions:

- Ambient Temperature ..... 25°C
- Supply Voltage (Vcc) ..... 5.0 ± .05Vdc
- Input Pulse Amplitude ..... 3.2V Nom.
- Input Pulse Width (tw) ..... 2 × TD Min.
- Input Pulse Duty Cycle ..... 25%
- Input Pulse Rise Time ..... 3 nsec (10% - 90%)

## L-87-500 SERIES Dual Triggerable 5 Tap Hermetic Sealed



JBM STANDARD ENCAPSULATED	tph/tpl @ TEMP	TAP 1 PIN 12	TAP 2 PIN 4	TAP 3 PIN 10	TAP 4 PIN 6	TAP 5 PIN 8	JBM HERMETIC SEALED
L-14-850	@ 25°C	5 ± 2 ns	10 ± 2 ns	15 ± 2 ns	20 ± 2 ns	25 ± 2 ns	L-87-500
	-55/+125°C	5 ± 2.5 ns	10 ± 2.5 ns	15 ± 3 ns	20 ± 3 ns	25 ± 3 ns	
L-14-851	@ 25°C	6 ± 2 ns	12 ± 2 ns	18 ± 2 ns	24 ± 2 ns	30 ± 2 ns	L-87-501
	-55/+125°C	6 ± 3 ns	12 ± 3 ns	18 ± 3 ns	24 ± 3 ns	30 ± 3 ns	
L-14-852	@ 25°C	7 ± 2 ns	14 ± 2 ns	21 ± 2 ns	28 ± 2 ns	35 ± 2 ns	L-87-502
	-55/+125°C	7 ± 3 ns	14 ± 3 ns	21 ± 3 ns	28 ± 3 ns	35 ± 3 ns	
L-14-853	@ 25°C	8 ± 2 ns	16 ± 2 ns	24 ± 2 ns	32 ± 2 ns	40 ± 2 ns	L-87-503
	-55/+125°C	8 ± 3 ns	16 ± 3 ns	24 ± 3 ns	32 ± 3 ns	40 ± 3 ns	
L-14-854	@ 25°C	9 ± 2 ns	18 ± 2 ns	27 ± 2 ns	36 ± 2 ns	45 ± 2.5 ns	L-87-504
	-55/+125°C	9 ± 3 ns	18 ± 3 ns	27 ± 3 ns	36 ± 3 ns	45 ± 3.5 ns	
L-14-855	@ 25°C	10 ± 2 ns	20 ± 2 ns	30 ± 2 ns	40 ± 2 ns	50 ± 2.5 ns	L-87-505
	-55/+125°C	10 ± 3 ns	20 ± 3 ns	30 ± 3 ns	40 ± 3 ns	50 ± 3.5 ns	
L-14-856	@ 25°C	15 ± 2 ns	30 ± 2 ns	45 ± 2.5 ns	60 ± 3 ns	75 ± 4 ns	L-87-507
	-55/+125°C	15 ± 3 ns	30 ± 3 ns	45 ± 3.5 ns	60 ± 4 ns	75 ± 5 ns	
L-14-857	@ 25°C	20 ± 2 ns	40 ± 2 ns	60 ± 3 ns	80 ± 4 ns	100 ± 5 ns	L-87-508
	-55/+125°C	20 ± 3 ns	40 ± 3 ns	60 ± 4 ns	80 ± 5.5 ns	100 ± 7 ns	
L-14-858	@ 25°C	30 ± 2.5 ns	60 ± 3 ns	90 ± 4.5 ns	120 ± 6 ns	150 ± 7.5 ns	L-87-510
	-55/+125°C	30 ± 3.5 ns	60 ± 4 ns	90 ± 6 ns	120 ± 8 ns	150 ± 10 ns	
L-14-859	@ 25°C	40 ± 3 ns	80 ± 4 ns	120 ± 6 ns	160 ± 8 ns	200 ± 10 ns	L-87-511
	-55/+125°C	40 ± 4 ns	80 ± 5.5 ns	120 ± 8 ns	160 ± 10 ns	200 ± 14 ns	
L-14-860	@ 25°C	50 ± 3.5 ns	100 ± 5 ns	150 ± 7.5 ns	200 ± 10 ns	250 ± 12.5 ns	L-87-512
	-55/+125°C	50 ± 4.5 ns	100 ± 7 ns	150 ± 10 ns	200 ± 14 ns	260 ± 17 ns	
L-14-861	@ 25°C	60 ± 4 ns	120 ± 6 ns	180 ± 9 ns	240 ± 12 ns	300 ± 15 ns	L-87-513
	-55/+125°C	60 ± 5 ns	120 ± 8 ns	180 ± 12 ns	240 ± 16 ns	300 ± 20 ns	
L-14-862	@ 25°C	80 ± 5 ns	160 ± 8 ns	240 ± 12 ns	320 ± 16 ns	400 ± 20 ns	L-87-515
	-55/+125°C	80 ± 6 ns	160 ± 10 ns	240 ± 15 ns	320 ± 21 ns	400 ± 26 ns	
L-14-863	@ 25°C	100 ± 6 ns	200 ± 10 ns	300 ± 15 ns	400 ± 20 ns	500 ± 25 ns	L-87-517
	-55/+125°C	100 ± 7 ns	200 ± 14 ns	300 ± 20 ns	400 ± 26 ns	500 ± 32 ns	